

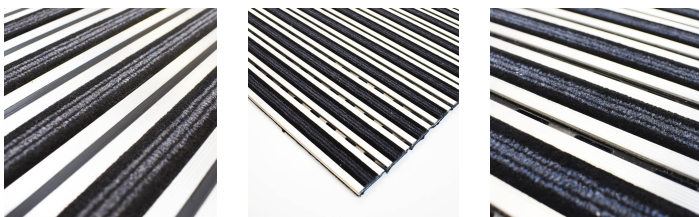
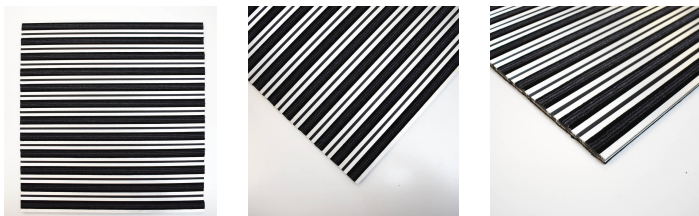
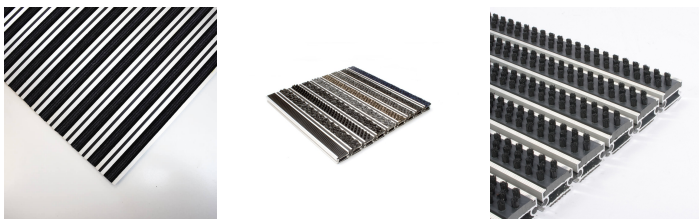


Plan.a™

Defend against dirt and moisture with versatile aluminium entrance matting

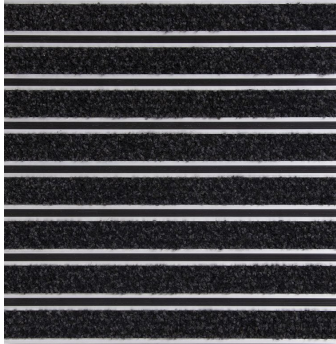


- Robust, high-quality aluminium system for heavy-duty use designed to cope with high footfall.
- Flexible, yet durable PVC linking joints for ease of handling and easy fitting.
- Custom-made to order to your specifications.
- Choose from one, or a combination of different surface options.
- Also now available with vibrant coloured needle punch or needle felt polypropylene carpet inserts as used in our Logomat Precision products.
- Manufactured in the UK.
- Fire tested to BS EN 13501-1 and slip tested to BS 7976-2.

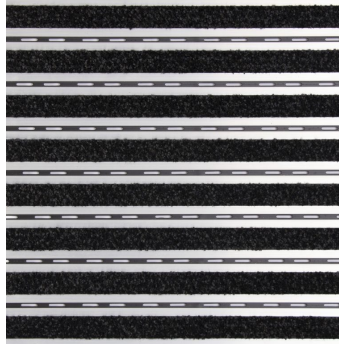




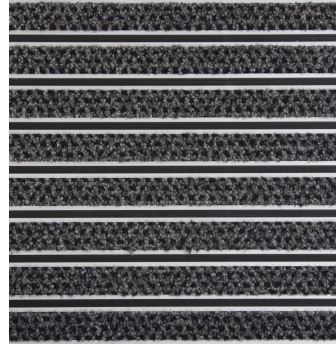
Styles Available



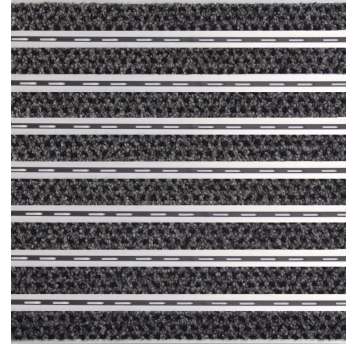
Anthracite Alba Closed



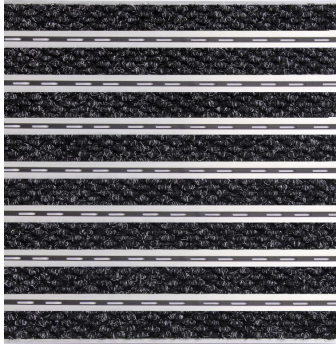
Anthracite Alba Open Low Profile



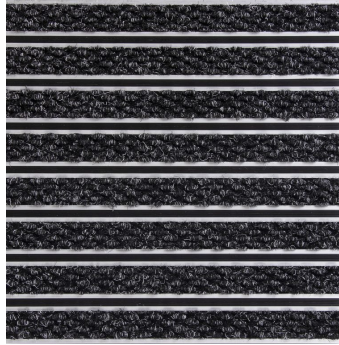
Grey Alba Closed



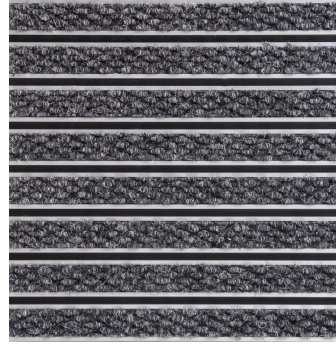
Grey Alba Open



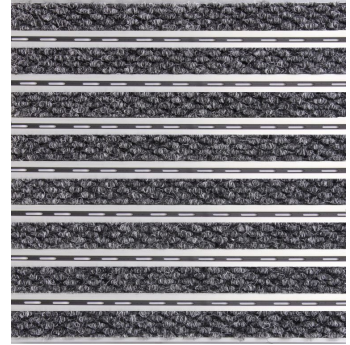
Berber Point Charcoal Open



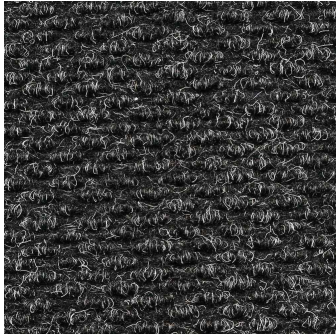
Berber Point Charcoal Closed



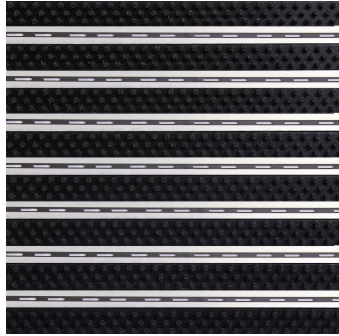
Berber Point Grey Closed



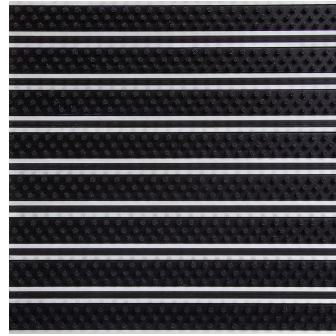
Berber Point Grey Open



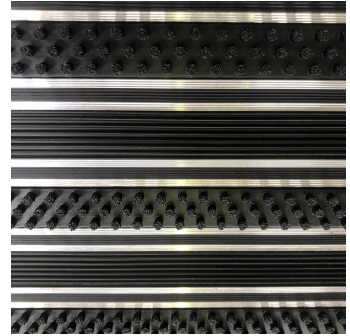
Berber Point Turkey



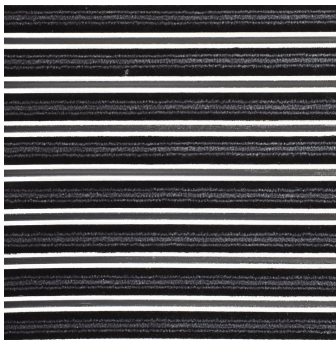
PVC Brushes Open



PVC Brushes Closed



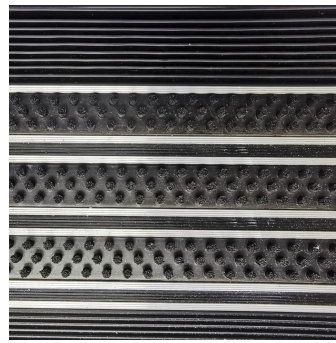
Brushes & Strips



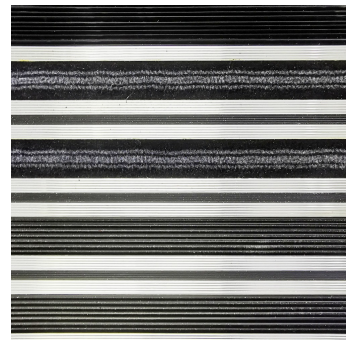
Woven Brush Closed Construction



Woven Brush Open Construction



High Profile EMS Expansion Joint
17mm



Low Profile EMS Expansion Joint
10mm

Parts

Part Number	Size	Colour	Weight (kg)
PLANA0024	Per Square Metre	Black	
PLANA0023	Per Square Metre	Black	
PLANA0022	Per Square Metre	Black	
PLANA0021	Per Square Metre	Black	
PLANA0020	Per Square Metre	Black	
PLANA0019	Per Square Metre	Black	
PLANA0018	Per Square Metre	Black	
PLANA0017	Per Square Metre	Black	
PLANA0016	Per Square Metre	Various	
PLANA0015	Per Square Metre	Various	
PLANA0014	Per Square Metre	Various	
PLANA0013	Per Square Metre	Various	
PLANA0012	Per Square Metre	Black	
PLANA0011	Per Square Metre	Black	
PLANA0010	Per Square Metre	Black	
PLANA0009	Per Square Metre	Black	
PLANA0008	Per Square Metre	Various	
PLANA0007	Per Square Metre	Various	
PLANA0006	Per Square Metre	Various	
PLANA0005	Per Square Metre	Various	
PLANA0004	Per Square Metre	Various	
PLANA0003	Per Square Metre	Various	
PLANA0002	Per Square Metre	Various	
PLANA0001	Per Square Metre	Various	

Technical Specifications

Material	Aluminium rails, PVC connection strips, ECONYL® Regenerated Nylon, PP or EPDM inlays
Surface Finish	Carpet, brushes or scrapers
Product Height	10 mm, 17 mm
Durability	Heavy to very heavy traffic entrances
Environmental Resistance	Suitable for wet and dry environments
UV Resistance	Yes
Typical Applications	Entrance areas
Installation Method	Installed in to recessed matwell or surface mounted with ramped edges
Other Product Performance Information	Uniform floor load = 14.36 KN/ m ² . Wheel load 159 kg per wheel
Fire Tested to	Alba inserts: BS EN 13501-1 Class Cfl - s1. PVC scraper inserts: BS EN 13501-1 Class Cfl - s2.
Notes	Alba is a tufted carpet product and therefore its appearance can vary depending on the direction of the pile and the light in the surrounding environment. To achieve a uniform appearance consider hoovering the product in a single direction.
Slip Tested to	BS 7676-2 Pendulum Slip Test: Alba inserts, Needle-punch inserts. BS EN 16165: Multi directional EPDM scrapers.

Additional Information



Installation Guide



Plan.a Alba - EN ISO 11925 Fire Test



Plan.a. Alba - BS EN 13501 Fire Test



Plan.a Needle-punch - EN ISO 11925 Fire Test



Plan.a Needle-punch - BS EN 13501 Fire Test



Plan.a Alba - BS 7676-2 Pendulum SlipTest



Plan.a Alba - EN ISO 9239 Fire Test



Plan.a Needle-punch - BS 7676-2 Pendulum SlipTest



Plan.a Needle-punch - EN ISO 9239 Fire Test



FLO8729C1Y9 Flooring Main - [35499.1] - Report (ID 602657)

