

**COBA**

Right Mat,  
First Time



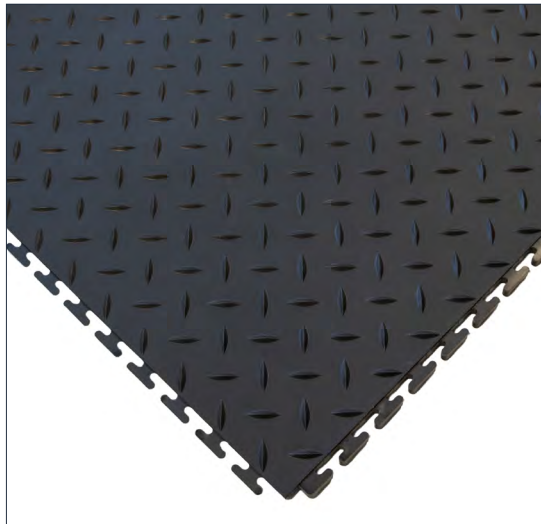
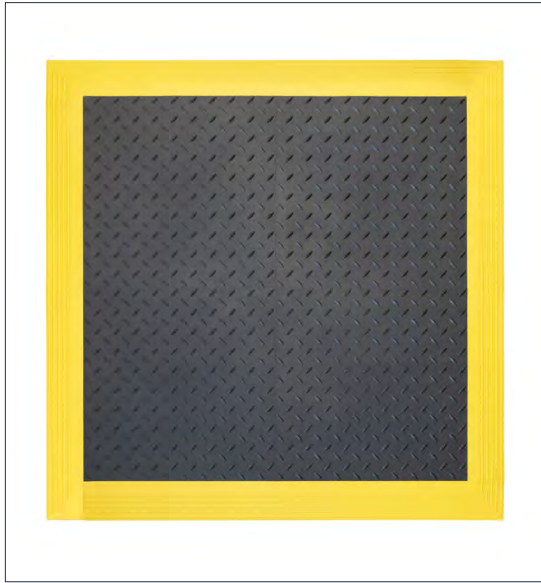
**NEW PRODUCTS**  
2026



# TOUGH LOCK ANTI-FATIGUE TILE

Build a Floor That Fights Fatigue

WORKPLACE SAFETY MATTING



- ➔ 15mm thick PVC anti-fatigue tiles engineered to reduce fatigue from prolonged standing
- ➔ Cushioned foam backing made from regenerated factory waste for improved operator comfort
- ➔ Manufactured using 75% recycled content to support CSR goals
- ➔ Interlocking system enables fast, tool-free installation across large areas
- ➔ Modular format allows individual tile replacement without lifting the full floor
- ➔ Durable checker plate surface enhances grip in industrial environments
- ➔ Hidden joints create a seamless, professional finish
- ➔ Optional high-visibility ramp edges reduce trip hazards and define work zones
- ➔ Well suited to assembly stations, packing benches, machine operator positions and inspection areas where employees stand for prolonged periods
- ➔ Frequently installed in factories, warehouses and workshops to create defined comfort zones without major refurbishment

Size	Product Code
50cm x 50cm Tile	TAT010001

Size	Part Description	Yellow	Orange
100mm x 600mm	Tough Lock Corner Female Edge	TAC070001F	TAC170001F
100mm x 600mm	Tough Lock Corner Male Edge	TAC070001M	TAC170001M
100mm x 500mm	Tough Lock Female Edge	TAE070001F	TAE170001F
100mm x 500mm	Tough Lock Male Edge	TAE070001M	TAE170001M

#### Typical Applications

Industrial settings where prolonged standing occurs

#### Environmental Resistance

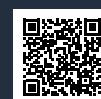
Suitable for dry indoor environments

#### Material

Hardwearing PVC

CONTACT OUR SALES TEAM TODAY

+44 (0)1788 228 555 | [sales@coba.com](mailto:sales@coba.com) | [coba.com](http://coba.com)



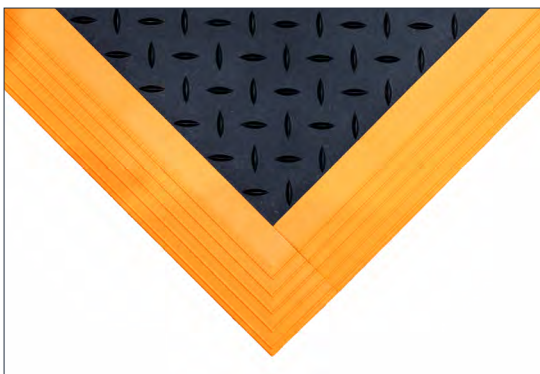
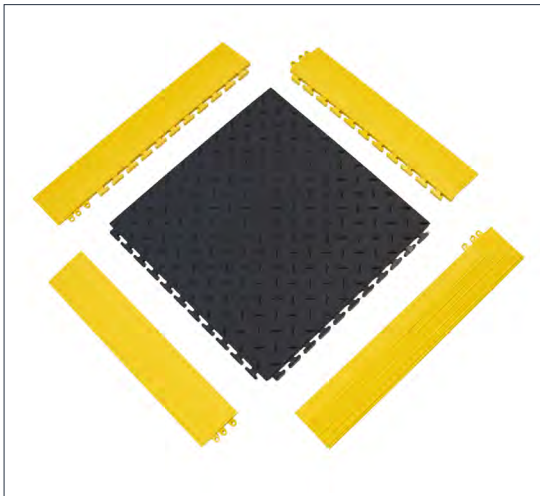
SCAN TO LEARN MORE!



# TOUGH LOCK ANTI-FATIGUE TILE EDGES

Improve Compliance. Reduce Trip Hazards

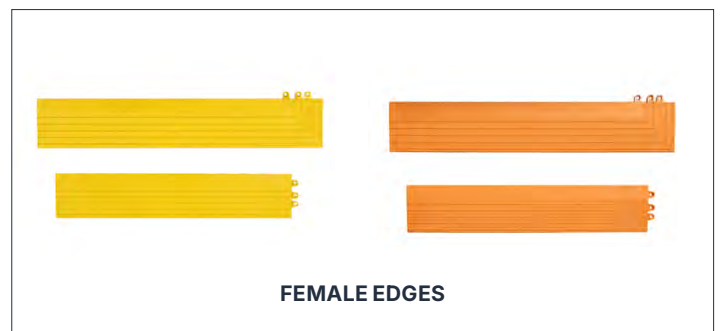
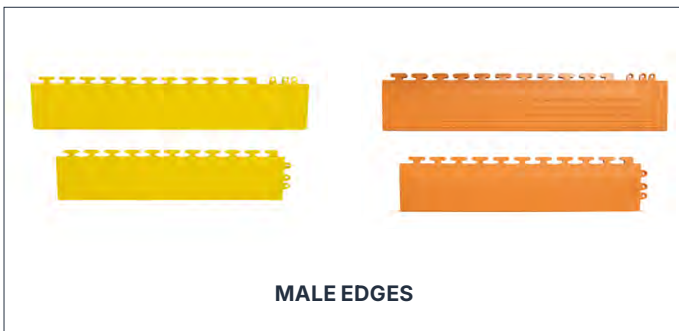
**COBA**



WORKPLACE SAFETY MATTING

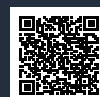
- Hardwearing PVC ramp edges designed to create smooth, bevelled transitions
- 15 mm thickness aligns with Tough Lock tile height for safe installation
- Available in male, female and corner formats for full border systems
- High-visibility yellow and orange options enhance workplace safety
- Reduces edge trip hazards and improves compliance
- Used to finish exposed edges around anti-fatigue work areas in production cells, warehouse pick faces and fabrication bays
- Particularly important where foot traffic or pallet trucks transition between concrete floors and raised tile systems

Size	Part Description	Yellow	Orange
100mm x 600mm	Tough Lock Corner Female Edge	TAC070001F	TAC170001F
100mm x 600mm	Tough Lock Corner Male Edge	TAC070001M	TAC170001M
100mm x 500mm	Tough Lock Female Edge	TAE070001F	TAE170001F
100mm x 500mm	Tough Lock Male Edge	TAE070001M	TAE170001M



CONTACT OUR SALES TEAM TODAY

+44 (0)1788 228 555 | [sales@coba.com](mailto:sales@coba.com) | [coba.com](http://coba.com)



SCAN TO LEARN MORE!



# COBATRACK HD MAT

Temporary Roadways for Serious Weight 50 - 120 Tonnes



GROUND PROTECTION MATS



- Engineered from recycled HDPE for heavy plant and machinery access
- Supports loads from 50 to 120 tonnes, depending on ground conditions
- Dual heavy traction surfaces for reliable all-weather grip
- 15 mm thick structural design for maximum durability
- Compatible with PU and steel connectors for secure configuration
- Reusable solution for large-scale construction and infrastructure projects
- Chosen for heavy plant access, crane pads and infrastructure works where substantial load distribution is required
- Suitable for civil engineering projects, utilities works and large-scale construction developments

Size	Load Capacity	Thickness	Product Code
1.2m x 2.4m	50-120 tonnes	15mm	TT010001HD



#### Typical Applications

Temporary roadways, heavy construction, military operations

#### Environmental Resistance

All weather conditions

#### Material

High-Density Polyethylene (HDPE)

CONTACT OUR SALES TEAM TODAY

+44 (0)1788 228 555 ✉ sales@coba.com 📄 coba.com



SCAN TO LEARN MORE!



# COBATRACK MAT

Deploy Heavy-Duty Access in Minutes

# COBA



GROUND PROTECTION MATS



- Manufactured from recycled HDPE for strength and sustainability
- Supports loads up to 5 tonnes, depending on ground conditions
- Dual surface design with traction pattern and checker plate reverse
- Integrated carry handles improve manual handling efficiency
- Pre-formed connection holes enable secure linking
- 10 mm thick construction for durable temporary roadways
- Compatible with PU and steel connectors for secure configuration
- Designed for repeat use across construction, events and car parks
- Regularly deployed for temporary roadways, compound access, cabin siting and car park overspill
- A practical solution for contractors and facilities teams needing to prevent rutting and ground damage during vehicle movement

Size	Load Capacity	Thickness	Product Code
0.915m x 2.4m	5 tonnes	10mm	TT010001



#### Typical Applications

Festivals, temporary kitchens, light construction, outdoor markets, golf courses

#### Environmental Resistance

All weather conditions

#### Material

High-Density Polyethylene (HDPE)

CONTACT OUR SALES TEAM TODAY

+44 (0)1788 228 555 ✉ sales@coba.com 📱 coba.com



SCAN TO LEARN MORE!



# COBATRACK MAT PU CONNECTORS

Secure your ground protection mats with fast-fit, reusable connectors designed for reliable temporary installations

GROUND PROTECTION MATS ACCESSORIES



PU DOUBLE CONNECTOR



PU SINGLE CONNECTOR

- Reusable connectors designed specifically for COBATrack ground protection mats
- Available in both PU (bolt-fixed) and steel (tool-free) options
- Single and double connector formats to suit different layouts
- PU connectors supplied with bolts for a strong, secure connection
- Steel connectors enable quick installation with no bolts required
- Provides a stable link between mats to reduce movement under load
- Quick to install and easy to remove for temporary or repeat use
- Durable construction suitable for demanding site conditions

Size	Product Code
PU Double Connector	CT01PUDC
PU Single Connector	CT01PUSC

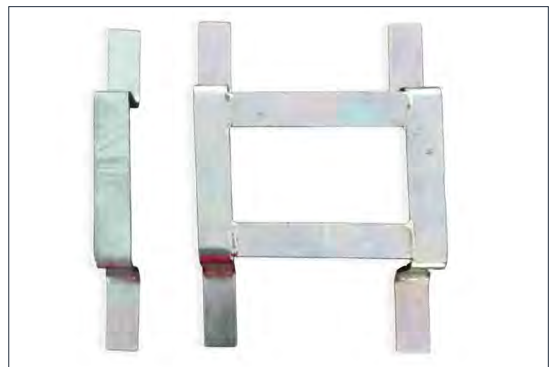
## COBATRACK MAT STEEL CONNECTORS

Quick-fit steel connectors for fast, secure COBATrack installations without the need for bolts



- Designed to securely connect COBATrack ground protection mats
- Bolt-free design enables faster installation on-site
- Available in both single and double connector formats
- Strong, secure fit helps reduce mat movement under load
- Durable steel construction for demanding environments
- Quick to install and easy to remove between projects
- Ideal for temporary access routes and reusable mat systems

Size	Product Code
Steel Double Connector	CT01SDC
Steel Single Connector	CT01SSC



CONTACT OUR SALES TEAM TODAY

+44 (0)1788 228 555 ✉ sales@coba.com 📄 coba.com



SCAN TO LEARN MORE!



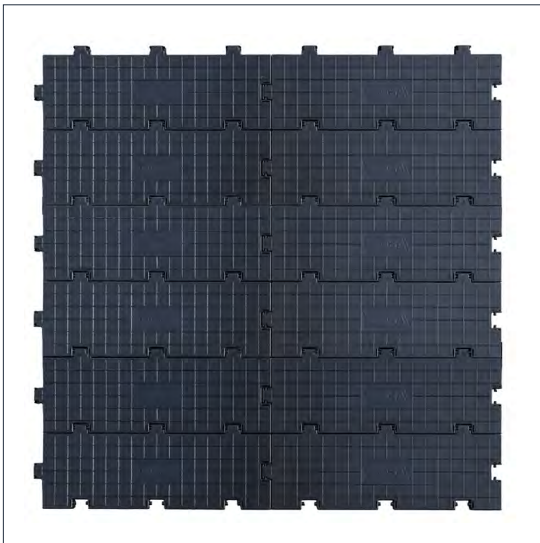
# COBATRACK TILES

Instant Access. Zero Ground Damage

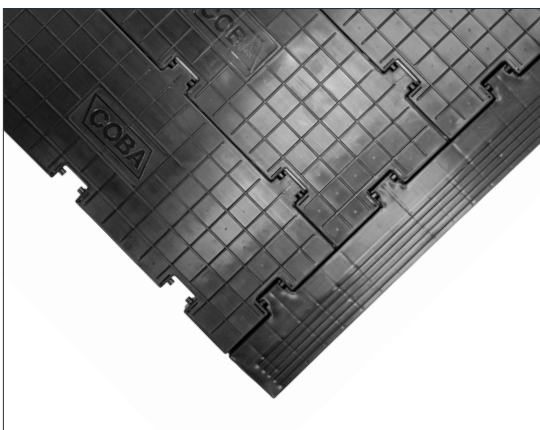
# COBA



GROUND PROTECTION MATS



- Impact-resistant polypropylene tiles for temporary ground protection and access routes
- Slip-resistant surface improves grip for pedestrians and light vehicles
- Supports loads up to 2 tonnes (depending on ground conditions)
- Suitable for grass, soil and uneven terrain
- Interlocking system creates stable temporary flooring without specialist tools
- 12 mm thick construction balances strength with manageable handling
- Reusable design reduces reinstatement and repair costs
- Specified for temporary pedestrian walkways, site access routes and event flooring over grass or soft ground
- Suitable for construction sites, outdoor shows, school grounds and public events where protecting turf and maintaining safe footing is essential
- Interlocking ramped edges are available to provide a smooth transition between matting and surrounding floor surfaces



Size	Product Code
450mm x 150mm	CT010001

Size	Part Description	Product Code
450mm x 650mm	Female Edge	CTE010001F
450mm x 650mm	Male Edge	CTE010001M

#### Typical Applications

Construction, landscaping, events, catering and temporary car parks

#### Environmental Resistance

Suitable for outdoor use

#### Material

Polypropylene

CONTACT OUR SALES TEAM TODAY

+44 (0)1788 228 555 | [sales@coba.com](mailto:sales@coba.com) | [coba.com](http://coba.com)



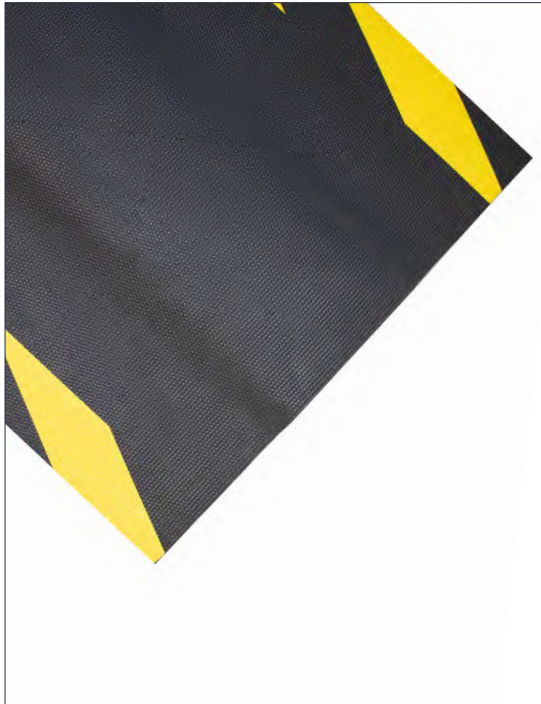
SCAN TO LEARN MORE!



# CABLE PRO MAT – MP

Protect cables, reduce trip risks and maintain grip in demanding industrial environments

FLOOR LEVEL SAFETY ACCESSORIES



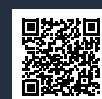
- ➔ Heavy-duty rubber cable protection mat designed for industrial and commercial use
- ➔ Integrated cable channel secures and protects loose cables from foot traffic and light equipment
- ➔ Textured rubber surface improves traction on slippery or high-risk floors
- ➔ High-visibility hazard borders increase awareness and help reduce trip incidents
- ➔ 9 mm low-profile design balances robust cable protection with safe pedestrian access
- ➔ Durable rubber compound withstands demanding indoor and outdoor environments
- ➔ Easy to lay, reposition and clean for flexible, changing workspaces
- ➔ Helps extend cable lifespan by reducing wear and damage
- ➔ Suitable for factories, warehouses, construction sites and EV charging area

Size	Product Code
0.3m x 10m	CPM010001
0.3m x 10m	CPM010002
0.3m x per linear metre	CPM010002C



CONTACT OUR SALES TEAM TODAY

+44 (0)1788 228 555 ✉ sales@coba.com 📞 coba.com



SCAN TO LEARN MORE!



# CABLE PRO MAT – CARPET

A discreet cable management solution that reduces trip hazards in commercial and public spaces

# COBA

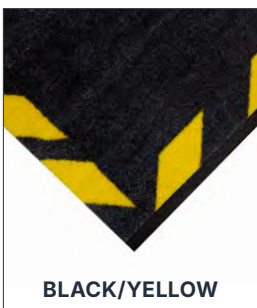


FLOOR LEVEL SAFETY ACCESSORIES



- Cable protection mat with integrated channel to secure and cover loose cables
- Nylon carpet surface provides a professional appearance in customer-facing environments
- Available in two neutral shades to suit office and commercial interiors
- Non-slip rubber backing helps keep the mat securely in place
- High-visibility borders improve awareness and reduce trip risk
- Suitable for use with underfloor heating systems
- Lightweight design allows easy installation, repositioning and removal
- Protects cables from foot traffic and light equipment
- Ideal for offices, warehouses, exhibitions and event spaces

Size	COLOUR	Product Code
1.18m x 0.42m	Black/Yellow	CPM010702
1.18m x 0.42m	Grey/Yellow	CPM060702



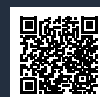
BLACK/YELLOW



GREY/YELLOW

CONTACT OUR SALES TEAM TODAY

+44 (0)1788 228 555 ✉ sales@coba.com 📱 coba.com



SCAN TO LEARN MORE!

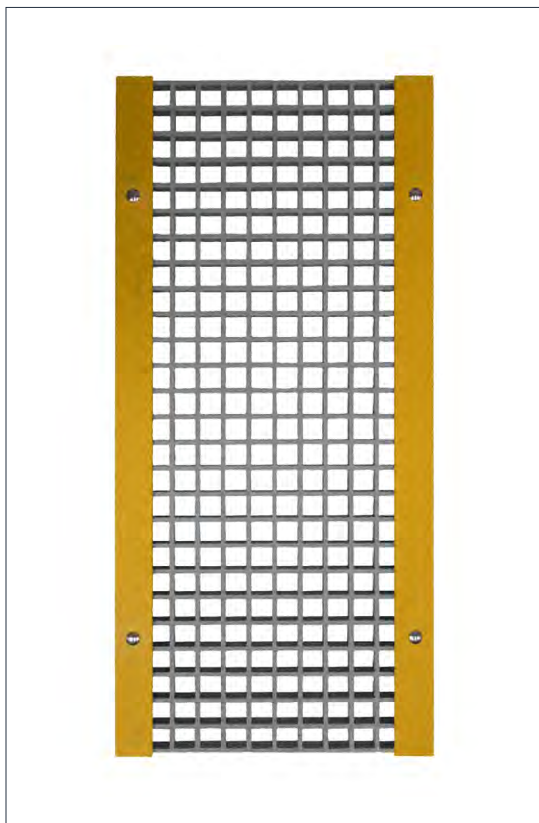
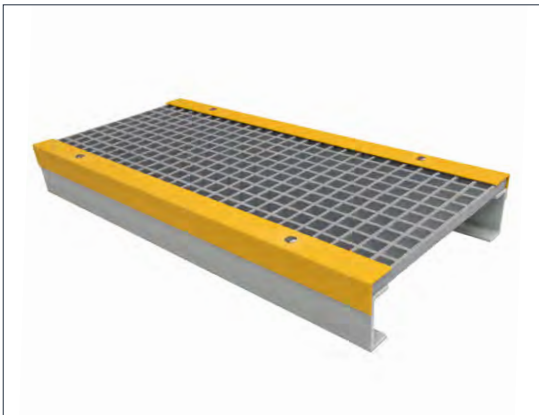
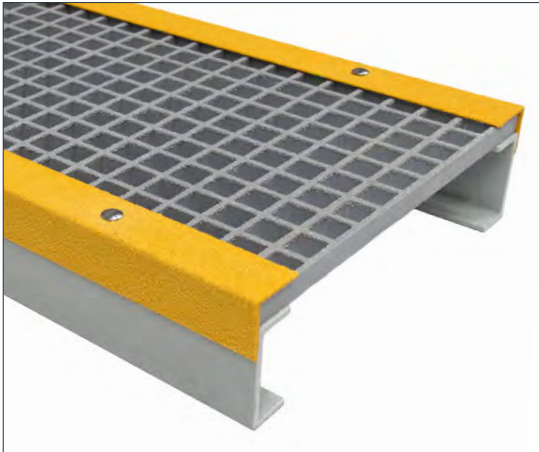


# COBAGRIP STEPOVERS

Stop Trips at the Source with Industrial GRP Safety Stepovers

# COBA

FLOOR LEVEL SAFETY ACCESSORIES

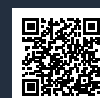


- Slip-resistant GRP stepovers designed to safely bridge pipes, trunking and cables in industrial and commercial environments
- Manufactured from corrosion-resistant glass reinforced plastic (GRP) for long-term indoor and outdoor durability
- Quartz crystal grit surface provides aggressive underfoot grip to help reduce slip incidents in wet or contaminated areas
- Slip tested to EN 16165:2021 Annex B to support workplace safety compliance
- High-visibility yellow step edges improve hazard awareness in busy operational environments
- Free-standing design enables immediate deployment with no floor fixing or installation downtime
- Lightweight yet robust construction allows easy repositioning as site layouts evolve
- 184kg Uniformly Distribution Load (UDL)
- Multiple units can be positioned together to create extended compliant walkways
- Can be cut to specification for tailored industrial applications
- Commonly used in manufacturing facilities, plant rooms and service areas where pipework, ducting or cable containment run across pedestrian routes
- Ideal for production lines, utilities corridors and maintenance access points where permanent floor alteration is not practical
- Offered as a self-build kit or made bespoke if required

Size	Clearance	Product Code
464mm x 995mm x 132mm	100mm	GRP060001SS
464mm x 995mm x 182mm	150mm	GRP060002SS
464mm x 995mm x 233mm	200mm	GRP060003SS

CONTACT OUR SALES TEAM TODAY

+44 (0)1788 228 555 ✉ sales@coba.com 📱 coba.com



SCAN TO LEARN MORE!





# BECOME A COBA DISTRIBUTOR



- ➔ Provide your customers with consistently high-quality products
- ➔ Custom branded brochures, catalogues and fliers to support your marketing
- ➔ Rapid expert advice
- ➔ Superior support – joint site visits, product training and world class marketing
- ➔ Live product data delivered through Product Information Management platform
- ➔ MatBrain and ROI Calculator – free technology for you to guarantee certainty



## STOP

THE UNCERTAINTY ABOUT WHICH ANTI-FATIGUE MAT TO CHOOSE

## ASK

THE EXPERTS TO QUICKLY FIND THE BEST FIT

USE  **MatBrain™**  
TO FIND THE RIGHT MAT, FIRST TIME™



## WHAT WE DO DIFFERENTLY



45+ YEARS OF MATTING EXPERTISE



FREE SAMPLE SERVICE



PERSONAL CUSTOMER SERVICE



LOCALISED SUPPLY



DISTRIBUTOR SUPPORT



HUGE STOCK HOLDING



NEXT DAY DELIVERY AVAILABLE



GLOBAL REACH LOCAL SERVICE



SITE SURVEY AND INSTALLATION SERVICES



VIRTUAL VISITS

## ROI CALCULATOR

### STOP

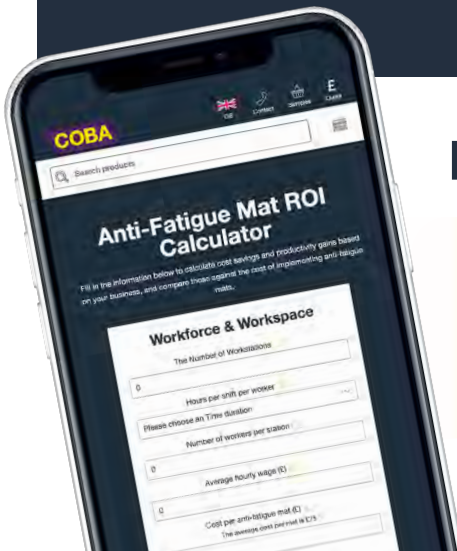
ASKING WHETHER ANTI-FATIGUE MATS ARE AFFORDABLE

### ASK

WHETHER ONGOING FATIGUE-RELATED LOSSES ARE SUSTAINABLE

### USE

THE COBA ROI CALCULATOR



# COBA

Right Mat,  
First Time



## Get in touch with your local team today!

### United Kingdom

+44 (0)1788 228 555  
sales@coba.com  
www.coba.com

### France

+33 0186 65 23 57  
commercial@coba.com  
www.coba.com/fr

### Germany

+49 (2161) 2945-0  
verkauf@coba.com  
www.coba.com/de

### Italy

+49 (2161) 2945-0  
vendite@coba.com  
www.coba.com/it

### Poland

+48 12 446 92 30  
sprzedaz@coba.com  
www.coba.com/pl

### Portugal

+34 93271 5957  
vendas@coba.com  
www.coba.com/pt

### Spain

+34 93271 5957  
ventas@coba.com  
www.coba.com/es

### Slovakia

+421 41 507 11 12  
sales@cobaurope.sk  
www.coba.com/sk

### South Africa

+27 11 452 7961 (JHB) +27 21 557 1204 (CPT)  
sales@cobafrica.com  
www.coba.com/za